



SOCOMATE  
INTERNATIONAL

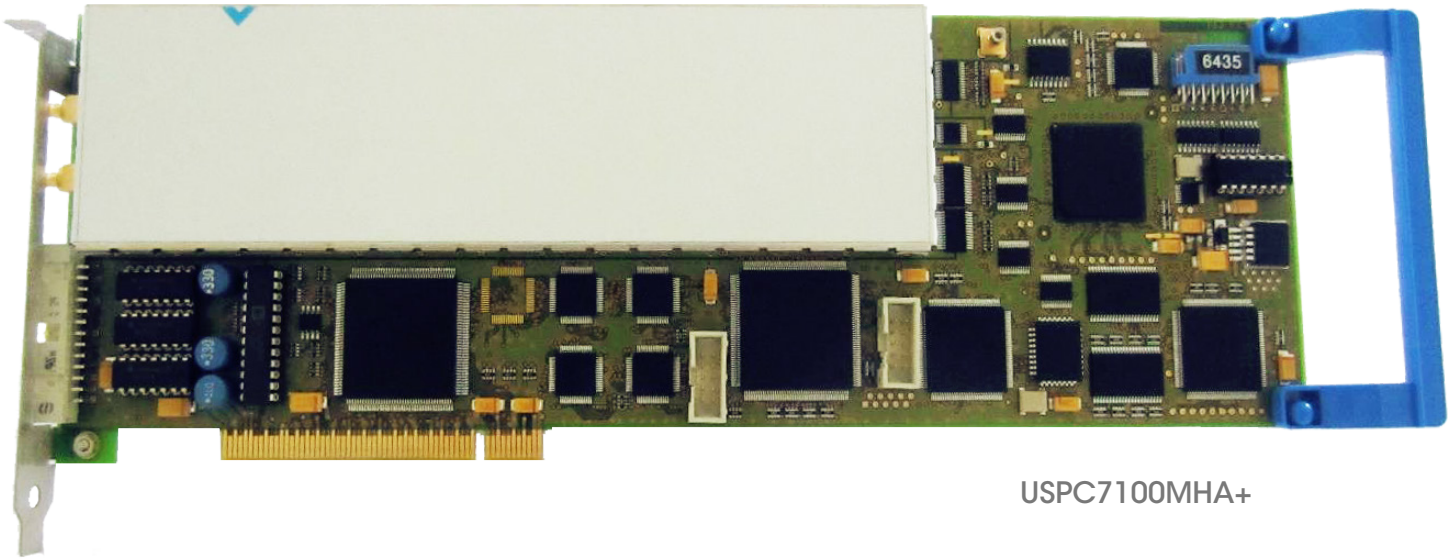
# PCRCPP7101HA+

PCI Card & Remote Pulser Board RCPP

ADVANCED NDT LTD

www.advanced-ndt.co.uk

Cost effective solution for single and multiple channel UT system



USPC7100MHA+

USPC Combined  
with 1 Channel RCPP

## Main Features:

Remote pulser  
& Pre-amplifier board

Max PRF: 20kHz

Analogue & Alarm Outputs  
from USPC7100MHA+ PCI card



RCPP - 1 Channel

**PCRCPP7101HA+**  
with Real Time  
A & C-SCAN Data Acquisition





**SOCOMATE**  
INTERNATIONAL

# MAIN SPECIFICATIONS

**ADVANCED NDT LTD**  
www.advanced-ndt.co.uk

**Advanced NDT Limited**  
Orchard House, Orchard Close  
Severn Stoke, Worcester, WR8 9JJ, England  
Tel: 01905 371460 Fax: 01905 371477  
Web: www.advanced-ndt.co.uk  
Email: sales@advanced-ndt.co.uk

## RCPP - 1 CHANNEL

### Remote Pulser :

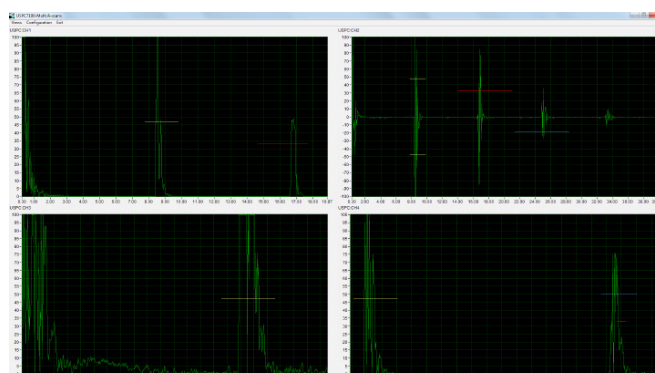
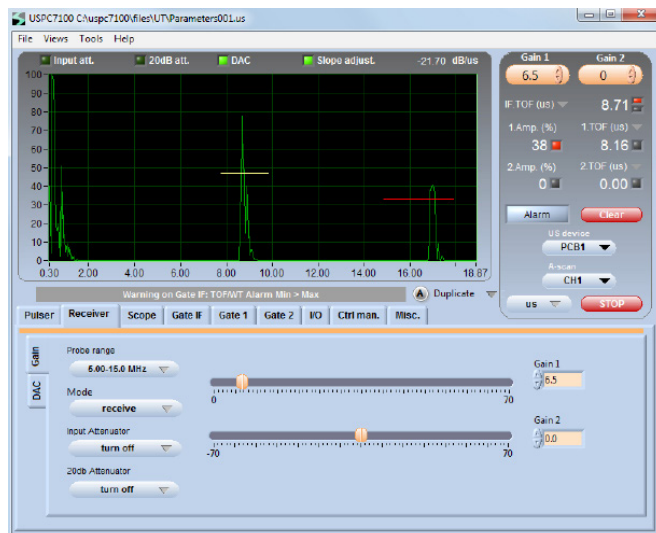
- Square Wave
  - 5 ns fall time – 7.5 ns rise time
  - 125/ 250 Volts power
  - 25 ns to 1000 ns width
- Max pulse repetition rate: 20kHz
- Remote input attenuator: 0/ 15 dB
- Pre-amplifier: 12 dB
- External triggers from USPC card:
  - PRF In
  - Start IN

### Inputs/ Outputs connectors:

- One TX SMB
- One RX SMB
- One RF SMB for sequential A-Scans output to USPC card RX SMB input
- One RS232 SubD for pulser/ attenuator setting
- One 10-Pin HE10 for external trigger input
- Supply: 5V - 1Amp/ 12V - 1Amp/ Ground

For RECEIVER (Analogic to digital converter), SOFTWARE and SDK, please consult our USPC7100MHA+ specifications.

Dimension: 250x84x20mm – (10x 3.31x 0.79 inch)  
Weight: 0.3 kg (0.67 Lb)  
Operating temperature: 0° to 50°C - (32° to 122° F)



Socomate International maintains the right to modify the specification of their equipments, at any time and in whatever manner, in order to improve their performances.



Zone Industrielle • 8, rue des Abbesses • 77580 CRECY LA CHAPELLE • FRANCE  
Phone : +33 1 6463 8109 • Fax : +33 1 6463 6021  
www.socomate.com • email : contact@socomate.fr



S.A.S au capital de 200.000,-€ - RC Meaux 92B17 - N° Siret 383 926 490 00020 - Code APE 2651B - TVA intracommunautaire FR27 383 926 490